

Classic Integra Studio Matting Tiles

Installation Guide

Install selected Classic Integra matting tiles. If required, install Integra INFR08 aluminium mat frame to suit recess, or bevelled rubber edging for loose lay applications, in accordance with manufacturer's recommendations.

Warning

Classic Integra carpet tile style matting must be allowed to acclimatise for a minimum of 24 hours prior to the installation.

Please check the product supplied, and read the entire instructions before starting any installation, then follow the steps.

Do not alter any pre-cut mats or frames without consulting Classic Architectural Group.

Any alterations to mats or frames supplied may incur expensive additional costs and/or re-manufacture of the matting. All costs are to be borne by the customer.

Installation

Lay the Carpet Tiles following normal established methods as per AS/NZS 2455.2.

1. Clean / vacuum out the mat well / substrate and ensure the mat frame is correctly installed to the correct heights.

2. Suitably prepare the substrate to receive the carpet installation to AS/NZS 2455.1 and AS/NZS 2455.2., including the following:

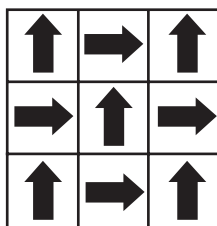
a) Remove deleterious and loose material, including surface treatments which could adversely affect adhesion. Leave the surface dust-free and clean.

b) Prep surface finish as required. Infill depressions with a suitable filler, and remove high spots and projections. If necessary, apply an even screed with a steel trowel. Alternatively, a self leveling compound may be used.

3. Concrete substrates: Test concrete substrate for dryness using the hygrometer test method described in AS/NZS 2455.1 Appendix B. If necessary use artificial means for drying out the substrate before installation.

4. Carpets shall not be laid until the moisture content of the substrate is in accordance with the requirements of AS/NZS 2455.1.

5. Layout entrance area using chalk lines to establish straight lines and starting points, and laying method being:



"Quarter Turn"

PLEASE NOTE

Studio Matting Tiles MUST be laid in a 'Quarter Turn' pattern, as shown above.

Tiles have a direction arrow on the underside.

6. Lay Carpet Tiles in accordance with AS/NZS 2455.2, fixing with a suitable proprietary pressure sensitive adhesive, suitable for holding tiles in position without permanent sticking. Primer shall be used where recommended by the adhesive manufacturer and shall be allowed to dry thoroughly before applying adhesive.

7. Spread the adhesive evenly as per adhesive manufacturer's recommended directions, pressing carpet tiles down firmly and rolling (if recommended) to ensure full contact and a good bond overall.

8. Remove all surplus adhesive from exposed faces of coverings as work proceeds.

9. Where required, trim the carpet tile matting with a sharp knife to fit.